

For Sale/Lease

SALE INFORMATION

SALE PRICE
\$315,000

Building Size
3,140 SF

Lot Size
17,859 SF

Year Built
1980

2017 RE Taxes
\$4,794.08

Zoning
General Commercial

Newly Remodeled Modern Office Space

514 N. Dodge | Wichita, KS



CONTACT INFORMATION:

Matt Hiatt, MBA
(316) 618-1100
mhiatt@insitere.com

Curt Robertson
(316) 618-1100
crobertson@insitere.com

PROPERTY FEATURES

- ◆ Newly Remodeled, Modern Office Space
- ◆ Located in the Historic Delano District
Right on the Arkansas River!
- ◆ Easy Access to Kellogg (US-54)
- ◆ High Visibility & Exposure
- ◆ Great Parking

LEASE INFORMATION

Space Available 3,140 SF

Lease Rate \$4,000/Month

Lease Type Modified Gross

Like/Follow us!

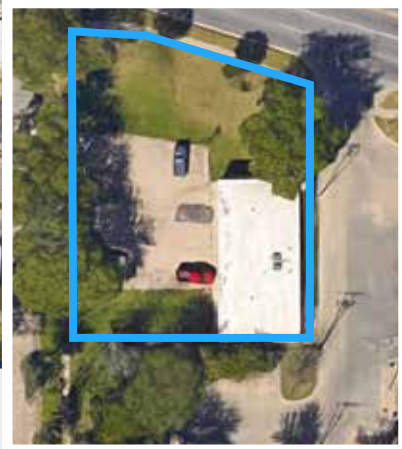


InSite
REAL • ESTATE • GROUP

**For
Sale/Lease**

Newly Remodeled Modern Office Space

514 N. Dodge | Wichita, KS



InSite Real Estate Group
608 W. Douglas, Suite 106
Wichita, KS 67203

TRAFFIC COUNTS
Seneca & McLean: 31,764 VPD

Like/Follow us!
 **InSite**
REAL • ESTATE • GROUP